

PennEngineering®

**PARTS MANUAL FOR
PEMSERTER® SERIES 2000®
MODEL 2009/2019
FASTENER INSTALLATION
PRESS**

PennEngineering®



Corporate Office:
5190 Old Easton Road
Danboro, PA 18916 USA
E-mail: info@pemnet.com
Toll Free: 800-342-5736 (USA Only)
Tel: 215-766-8853 • Fax: 215-766-3633

PEM U.K. And Europe:
Kirk Sandall Industrial Estate
Doncaster, South Yorkshire
DN3 1QR, England
E-mail: uk@pemnet.com
Tel: 01302 893100 • Fax: 01302 885341

PEM Asia/Pacific:
Citipoint Industrial Complex
152 Paya Lebar Road #03-06
Singapore 409020
E-mail: singapore@pemnet.com
Tel: 6 745 0660 • Fax: 6 745 2400

Visit our PEMNET™ Resource Center at www.pemnet.com

PARTS MANUAL FOR
PEMSERTER[®] SERIES 2000[®] PRESS
MODEL 2009 / 2019
FASTENER INSTALLATION PRESS

PennEngineering[®]
5161 APPLEBUTTER ROAD • BLDG 23
PIPERSVILLE, PENNSYLVANIA 18947
1-800-523-5321 • 1-215-766-3801

Document Part Number 8011428
Revision REL
03/06

SERIES 2009 / 2019 PARTS MANUAL

TABLE OF CONTENTS

	PAGE
SECTION 1 - MAIN PRESS ASSEMBLY	1
1.0 GENERAL IDENTIFICATION DRAWING	
SECTION 2 - HYDRAULIC/PNEUMATIC ENCLOSURE	3
2.0 HYDRAULIC/PNEUMATIC ENCLOSURE	
2.1 AIR/OIL TANK ASSEMBLY	
2.2 RAM VALVE REGULATOR ASSEMBLY	
SECTION 3 - ELECTRICAL ENCLOSURE	8
3.0 ELECTRICAL OMRON PANEL ASSEMBLY	
SECTION 4 - MAIN CYLINDER ENCLOSURE	11
4.0 MAIN CYLINDER ENCLOSURE	
4.1 DISTRIBUTION BOX ASSEMBLY	
4.2 SAFETY HOUSING ASSEMBLY	
4.3 LIGHTSTREAM COLLAR ASSEMBLY	
SECTION 5 - PRESS THROAT AREA	16
5.0 PRESS THROAT AREA	
5.1 SLIDE & GRIPPER ASSEMBLY	
5.2 ANVIL HOLDER ASSEMBLY	
SECTION 6 - OPERATOR CONTROLS	23
6.0 GENERAL IDENTIFICATION DRAWING	
SECTION 7 - FEEDER BOWL AREA	25
7.0 FEEDER BOWL AREA	
7.1 SHUTTLE SUPPORT ASSEMBLY	
SECTION 8 - TOOLING VALVE/STORAGE ENCLOSURE	29
8.1 8-STATION VALVE MANIFOLD	
8.2 PRESSURE RESERVOIR ASSEMBLY	
SECTION 9 - FOOTSWITCH ASSEMBLY	33
9.0 FOOTSWITCH ASSEMBLY	
SECTION 10 - FILTER/REGULATOR ASSEMBLY	35
10.0 FILTER/REGULATOR ASSEMBLY	
10.1 FILTER/REGULATOR ASSEMBLY – REPLACEMENT PARTS	
SECTION 11 - GENERAL SPARE PARTS & PRESS ACCESSORIES	38

SECTION 1

MAIN PRESS ASSEMBLY

SERIES 2000 PARTS MANUAL - MAIN PRESS ASSEMBLY
PEWSETER PART NO. 8002009 / 8002019

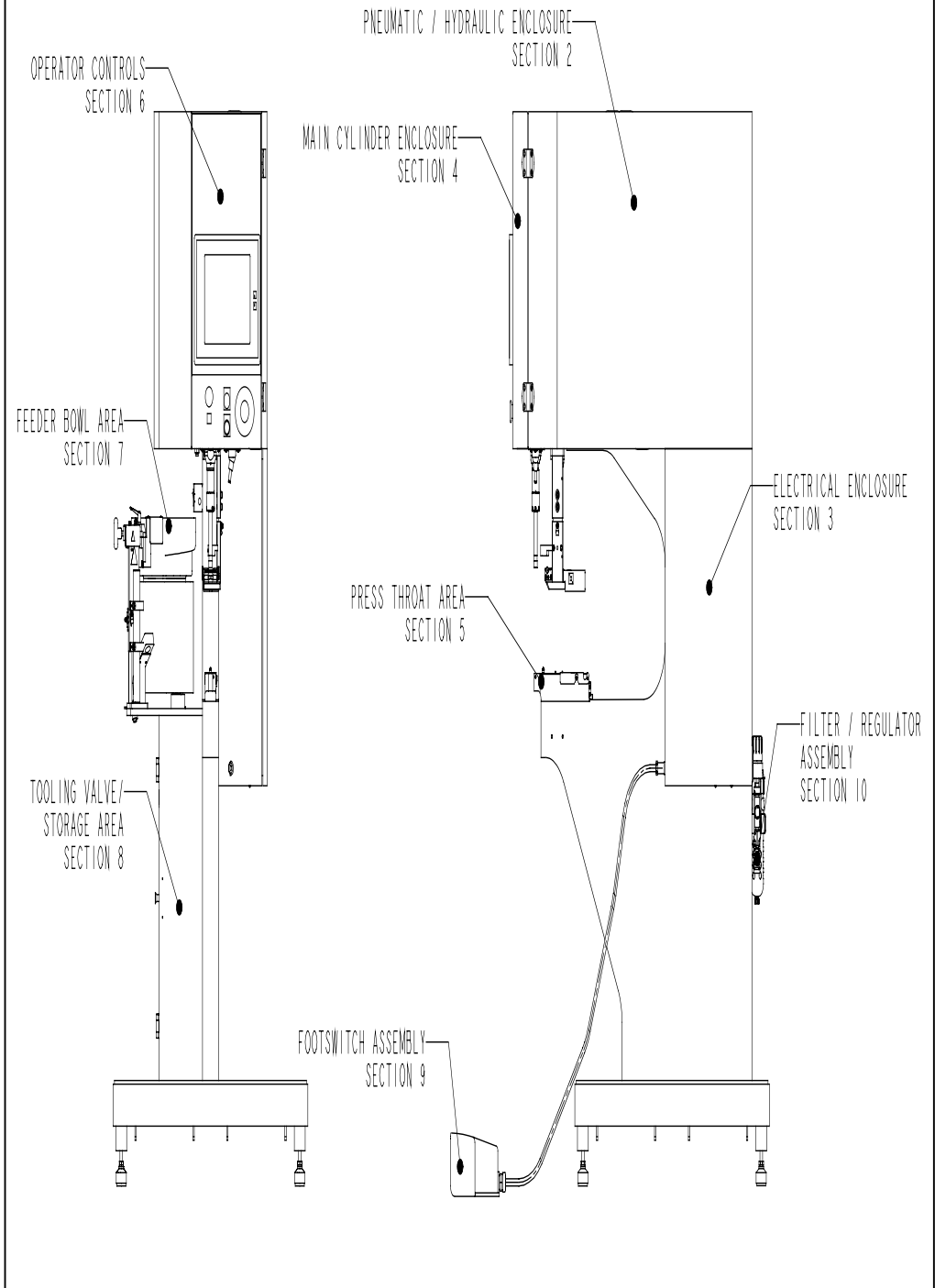
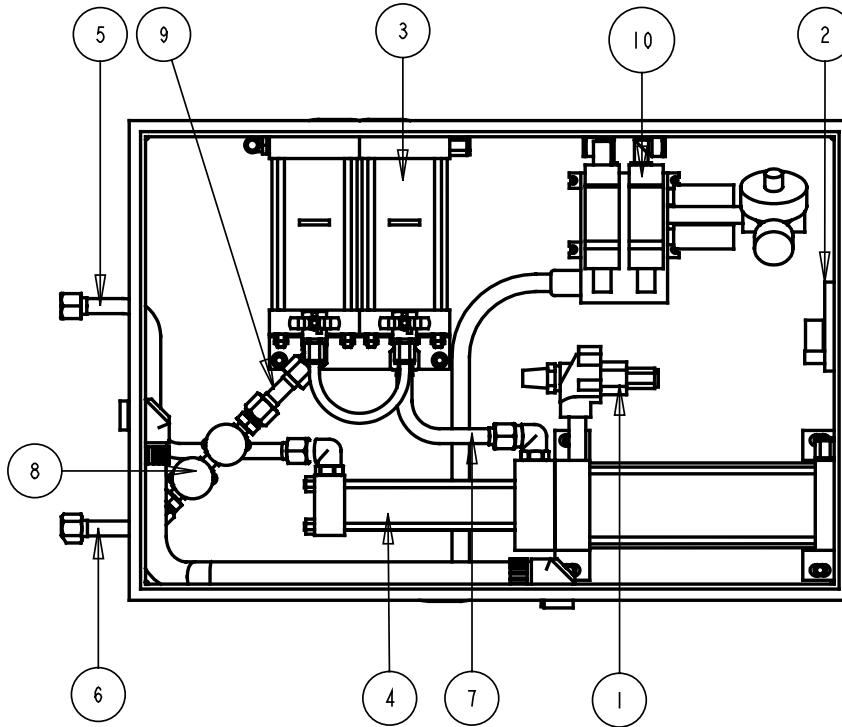


FIGURE 1.0

SECTION 2

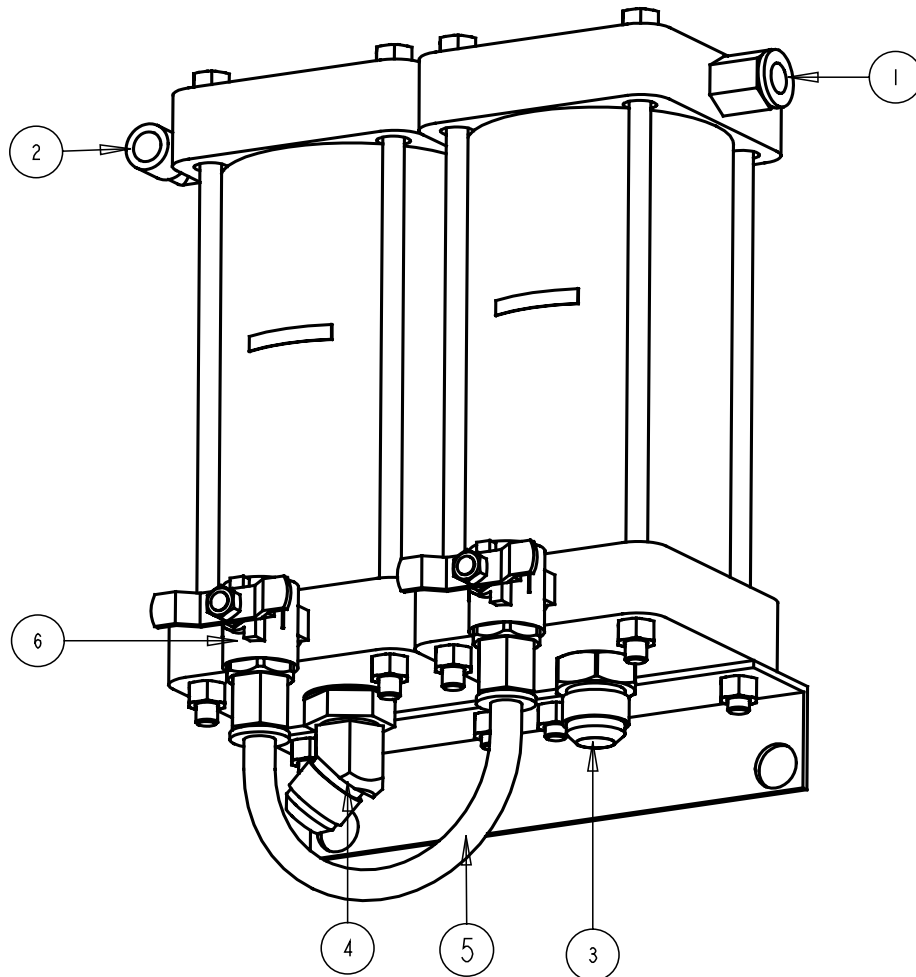
HYDRAULIC/PNEUMATIC ENCLOSURE

DETAIL HYDRAULIC / PNEUMATIC ENCLOSURE
SCALE 0.125



10	8004668	RAM VALVE ASSEMBLY W/ PILOT REGULATOR	1
9	8004626	PIPE ASSEMBLY, SAFETY/TANKS	1
8	8004636T	SAFETY VALVE ASSEMBLY	1
	8005816	SAFETY VALVE COIL ASSEMBLY	1
7	8004507	PIPE ASSEMBLY, TANKS/BOOSTER	1
6	8004506	PIPE ASSEMBLY, SAFETY/CYLINDER	1
5	8004498	PIPE ASSEMBLY, BOOSTER/CYLINDER	1
4	8004470	BOOSTER (Miller)	1
	8009301	BOOSTER (Sunny)	
3	8004369	AIR OIL TANKS, 4IN DIA X 7.5 IN TALL	1
2	8008375	ELECTRONIC AIR PRESSURE REGULATOR KIT	1
	8008201	ELECTRONIC AIR PRESSURE REGULATOR	1
1	8001573	EXHAUSE VALVE KIT	1
ITEM	PART NUMBER	DESCRIPTION	QTY

FIGURE 2.0



6	8005478	BALL VALVE, 90 DEGREE FLOW, 1/2 NPT, MALE - FEMALE	2
5	8000766	TUBING, 1/2 IN. OD.	1
4	8000297	FITTING, 45 DEG, SAE-12 TO 3/4, 37 DEG FLARE TUBING	1
3	8000226	STRAIGHT SAE-12 TO 3/4 IN. 37 DEG. FLARE TUBING	1
2	8000225	FITTING, ELBOW, 1/2 NPT TO 1/2 TUBE	1
1	8000224	FITTING, STRAIGHT, 1/2 MALE NPT TO 1/2 TUBE	3
ITEM	PART NUMBER	DESCRIPTION	QTY

FIGURE 2.1

SERIES 2000 - RAM VALVE ASSEMBLY
PEM PART NO. 8004668

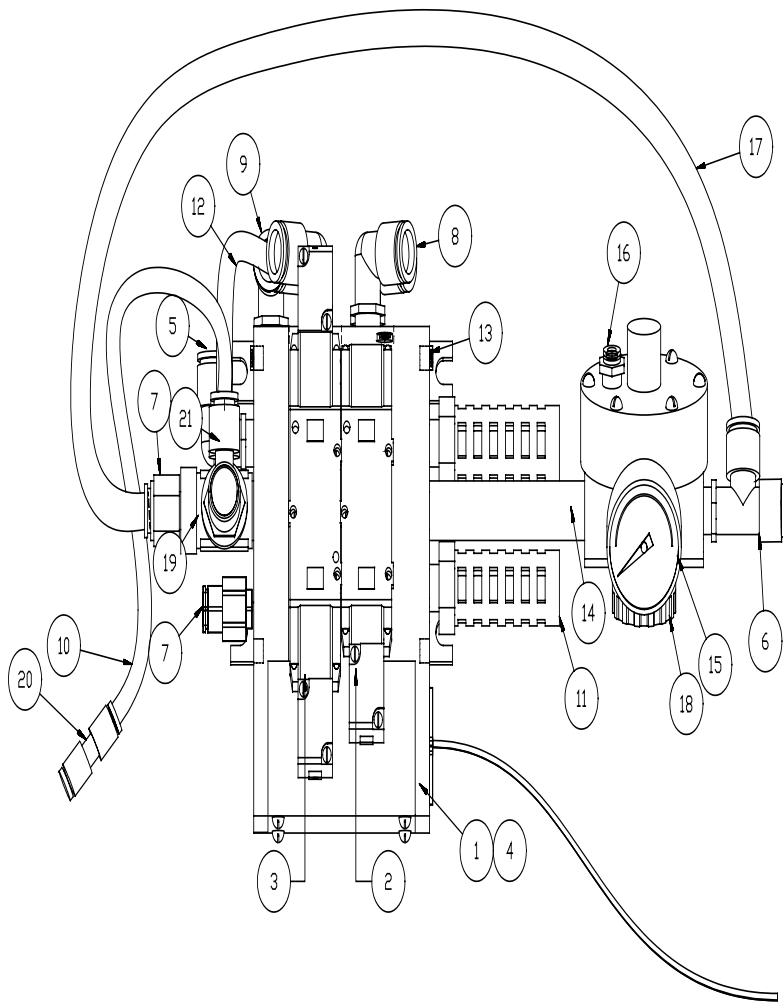


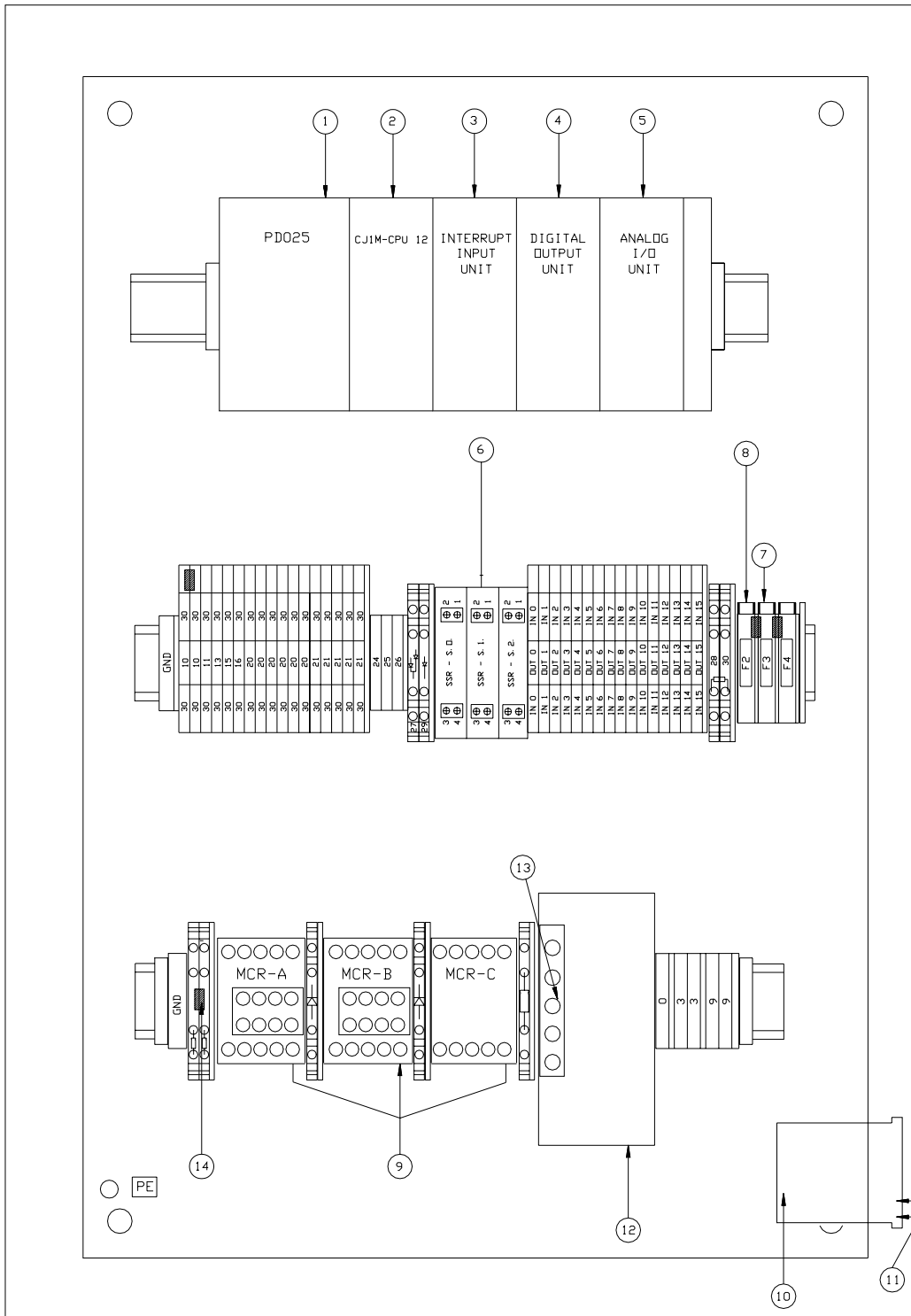
FIGURE 2.2

BILL OF MATERIAL			
ITEM	QTY.	PART #	DESCRIPTION
1	1	8001395	2- STATION MANIFOLD
2	1	8002228	VALVE- 2 POSITION
3	1	8002229	VALVE-3 POSITION
4	3	8004142	BLOCKING DISC
5	1	8004085	ELBOW 1/2 NPTx1/2 DIA. TUBE
6	1	8004086	MALE RUN "T" 1/2 DIA. TUBEx 1/2 NPT
7	2	8000224	STRAIGHT 1/2" DIA. X 1/2" NPT
8	4	8004088	ELBOW 3/8 NPTx1/2 DIA. TUBE
9	1	8005604	ELBOW 5/16" DIA. X 1/8 NPT"
10	28"	8004090	TUBE- POLY. 5/16" DIA.
11	2	8001624	MUFFLER 1/2 NPT
12	8"	8004090	TUBE- POLY. 5/16" DIA.
13	2	9800391692	STL. FLUSH PLUG- 1/8 NPT
14	1	9800391987	NIPPLE 4- 1/2 LNG.x 1/2 NPT
15	1	8004069	GAUGE (4M x 1/4" NPT.)
16	1	8004092	STRAIGHT 5/32 DIA.x 1/4 NPT
17	24"	8000253	TUBE POLY 1/2" DIA.
18	1	8003190	AIR PILOTED REGULATOR
19	1	8003232	STREET TEE - 1/2 NPT
20	1	8005605	STRAIGHT TUBE UNION 1/4" x 5/16"
21	1	8005606	DOUBLE BANJO 5/6" TUBE X 1/2" NPT

FIGURE 2.2 (Ram Valve Assembly BOM)

SECTION 3

ELECTRICAL ENCLOSURE



**FIGURE 3.0
ELECTRICAL ENCLOSURE**

BILL OF MATERIAL			
ITEM	PART NO.	DESCRIPTION	QTY.
15	8001536	POWER FILTER (<i>NOT SHOWN</i>)	1
14	8008112	RESISTOR, LASER 400 OHM 5 W 5%	1
13	8003052	CAPACITOR	1
12	8004552	DC POWER SUPPLY	1
11	8003548	FUSE 5 X 20 IEC 60127	2
10	8008414	POWER ENTRY MODULE	1
9	8005201	MAIN CONTROL RELAY	3
8	8004079	BUSS FUSE AGC ¾	1
7	8004140	BUSS FUSE AGC 2	2
6	8001159	SOLID STATE RELAY	3
5	8011346	ANALOG INPUT CARD	1
4	8011345	OUTPUT CARD	1
3	8011344	PLC INTERRUPT INPUT UNIT	1
2	8011349	CPU	1
1	8011319	POWER SUPPLY	1

FIGURE 3.0 (Electrical Enclosure BOM)

NOTE: Replacement battery for CPU (P/N 8006338)

Sales/Service must verify which battery the customer has to order the replacement, per instructions A-8011017.

For Models 2001/11 thru 2007/17 & some 2008/18

P/N 8002343 Omron# 3G2A9-BAT08

For Models 2008/18 & 2007/17 presses with QX™ Turret Tool Installed

P/N 8011027 Omron# CPM2ABAT01

For Models 2009/19

P/N 8011576 Omron# CJ1W-BAT01

Optional Flash Memory Card (64MB) for CPU (P/N 8011349)

P/N 8011348 Omron# HMC-EF7672

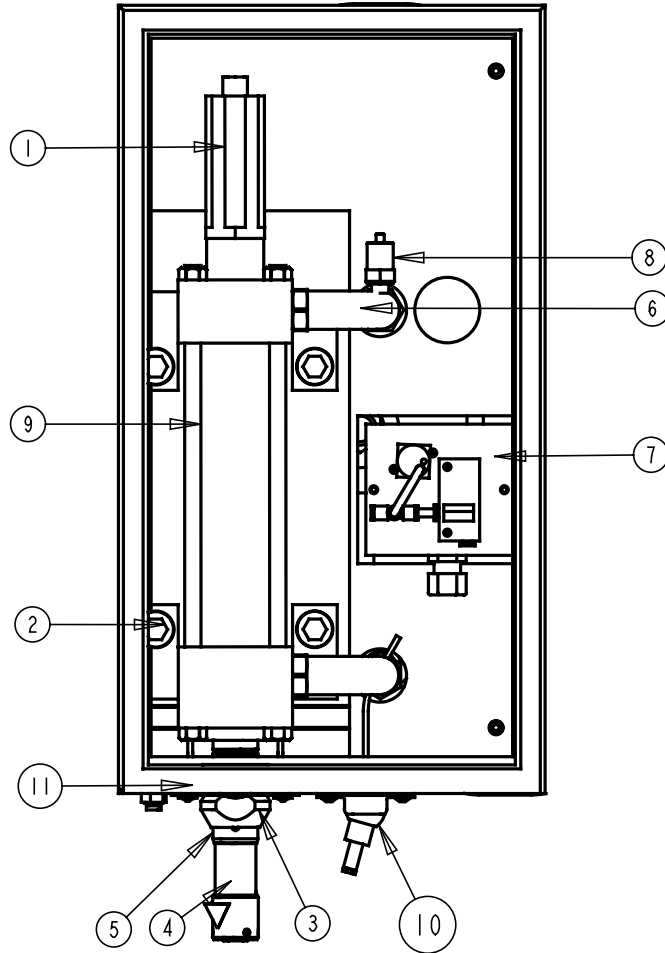
PLC (CJ1M) Programming Cable

P/N 8011574 Omron# CJ1W-CN226

SECTION 4

MAIN CYLINDER ENCLOSURE

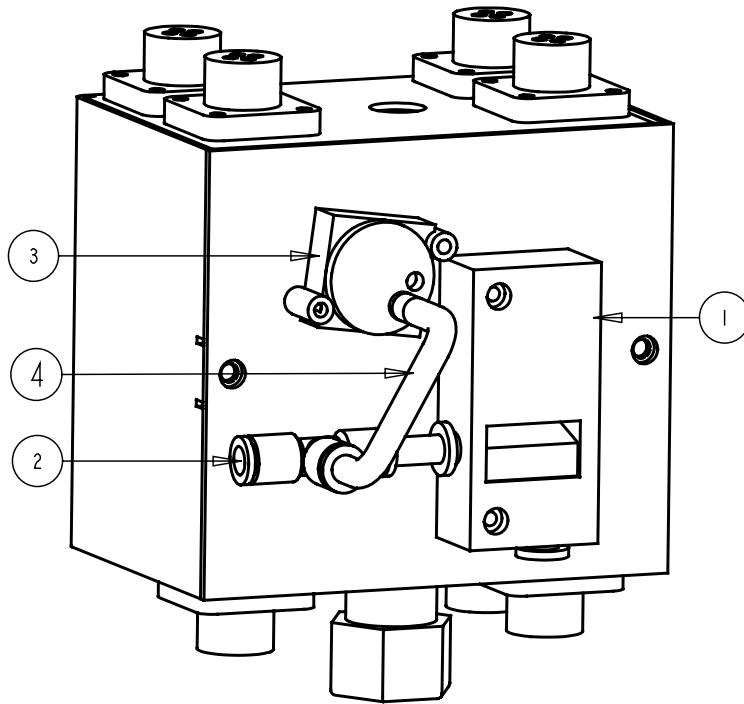
DETAIL MAIN CYLINDER ENCLOSURE
SCALE 0.200



11	8009728 8009715	SAFETY SENSOR REPLACEMENT KIT SAFETY SENSOR ASSEMBLY	1 2
10	8005820	LASER SPOTTING LIGHT	1
9	8005946	CYLINDER, MAIN	1
8	8008582	PRESSURE SENSOR	1
7	8004632	DISTRIBUTION BOX ASSEMBLY	1
6	8004499	LONG ELBOW, 1-1/16 STRAIGHT THREAD	1
5	8004213	ROD END, DETACHABLE	1
4	8003510	SAFETY HOUSING ASSEMBLY	1
3	8003248	LIGHTSTREAM COLLAR ASSEMBLY	1
2	8002480	SHCS 3/4-10 UNC-2A X 2-1/4 LG	4
1	8002345	LINEAR VARIABLE DIFFERENTIAL TRANSFORMER	1
ITEM	PART NUMBER	DESCRIPTION	QTY

FIGURE 4.0

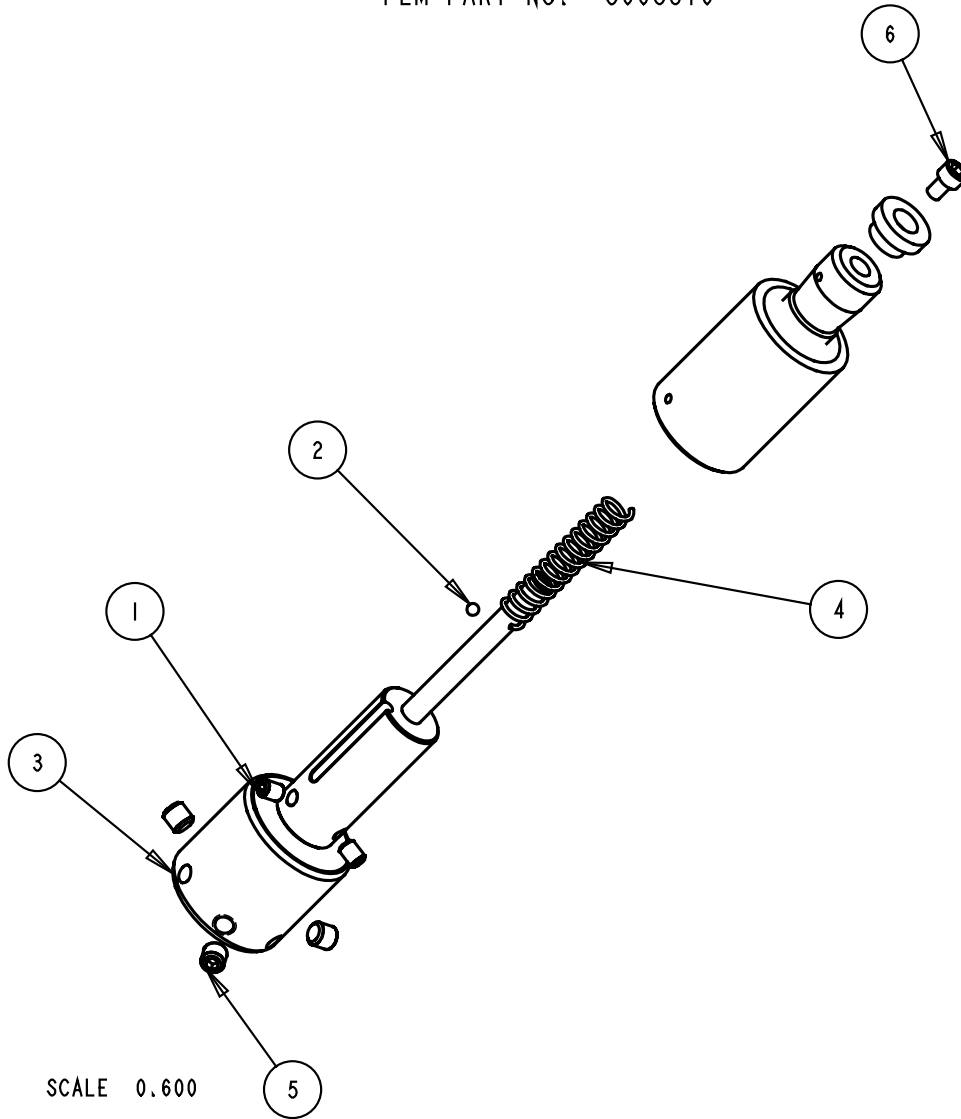
SERIES 2000 PUNCH VACUUM SYSTEM



4	8000310	TUBING, 1/4" O.D. (QTY FT)	1.3
3	9800391619	VACUUM SWITCH 10 HG ADJUSTABLE	1
2	8002165	TEE, UNION, 1/4 TUBING	1
1	8001400	VACUUM ASPIRATOR, 1/4 TUBE X 1/4 TUBE	1
ITEM	PART NUMBER	DESCRIPTION	QTY

FIGURE 4.1

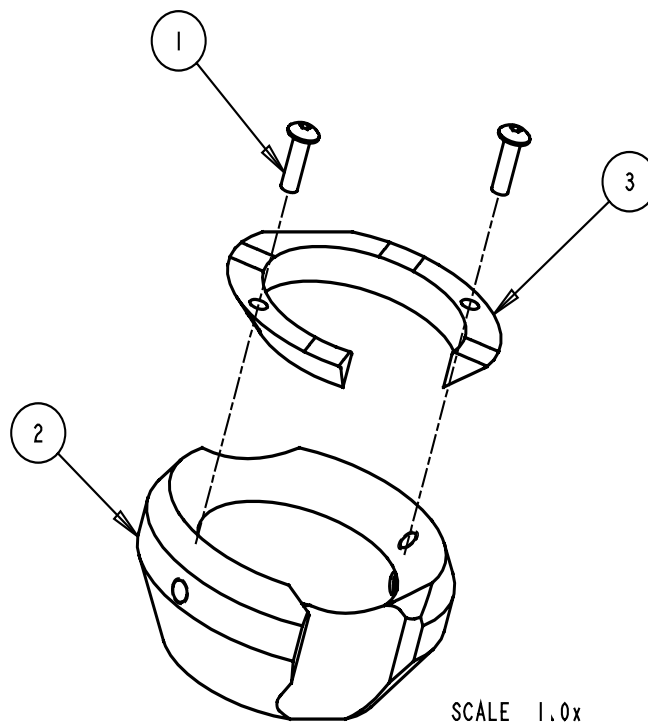
FIGURE 4.2
 SERIES 2000 - SAFETY HOUSING ASSEMBLY VER. 3
 PEM PART NO. 8003510



SCALE 0.600

BILL OF MATERIAL			
ITEM	PART NUMBER	DESCRIPTION	QTY
1	8002083	SSS #10-32 X 1/4", KNURLED CUP POINT	2
2	8002100	BALL BEARING, 1/8" DIA.	1
3	8003509	SAFETY AREA EXPANDING COLLAR	1
4	8003552	SPRING, SAFETY HOUSING VER. 3	1
5	980039430	SSS 1/4-20 X 1/4	3
6	980039744	SHCS #8-32 X 1/4 LG	1

FIGURE 4.3
 SERIES 2000 LIGHTSTREAM COLLAR ASSEMBLY
 PEM PART NO. 8003248

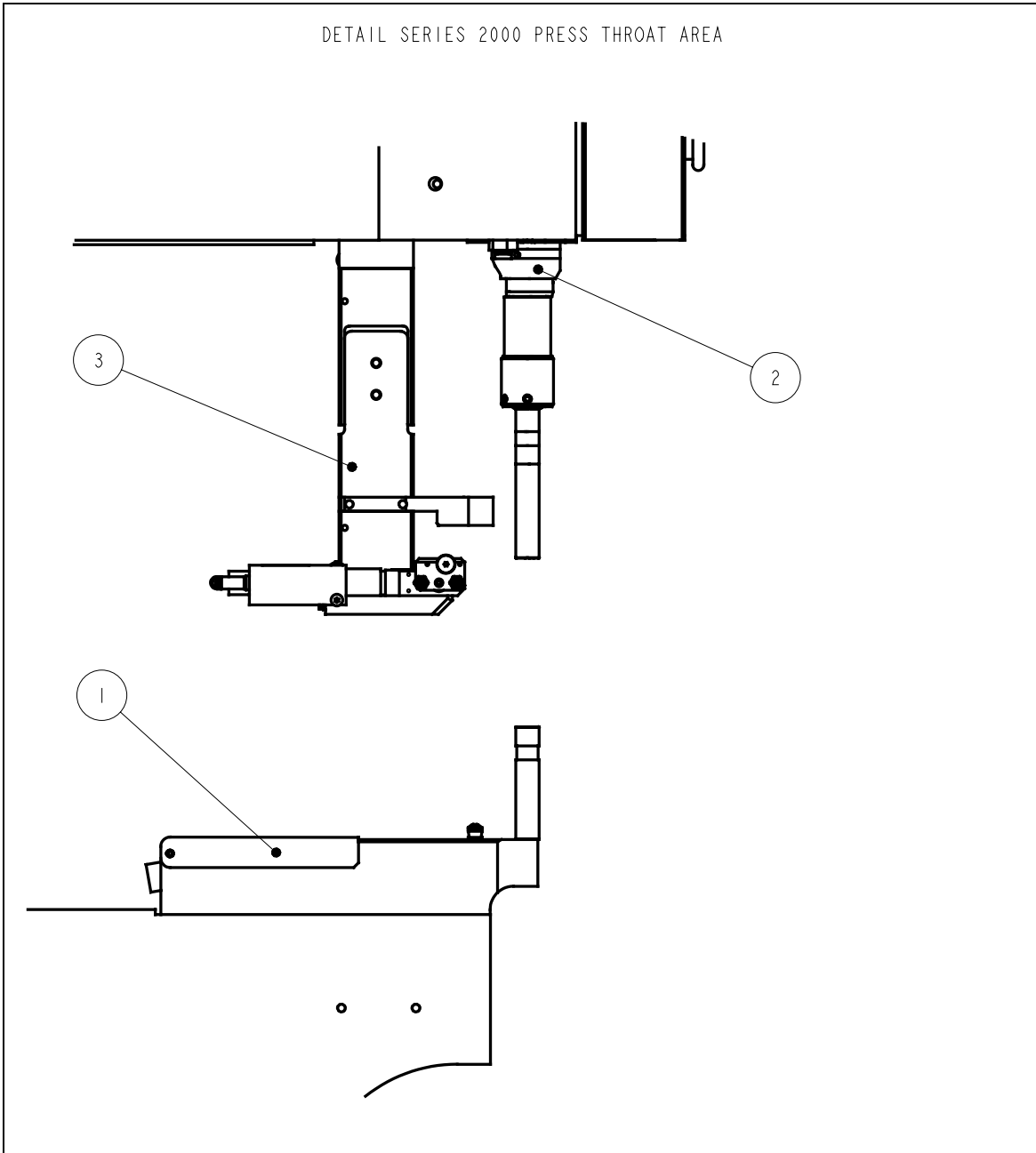


BILL OF MATERIAL			
ITEM	PART NUMBER	DESCRIPTION	QTY
1	8000688	BHCS #4-40 X 3/8 LG	2
2	8003023	LIGHTSTREAM COLLAR	1
3	8003251	REFLECTIVE COLLAR COVER	1

SECTION 5

PRESS THROAT AREA

DETAIL SERIES 2000 PRESS THROAT AREA



3	8010944	TF HANGER ASSEMBLY	1
2	8003248	LIGHTSTREAM COLLAR ASSEMBLY	1
1	8000672	ANVIL HOLDER ASSEMBLY	1
ITEM	PART NUMBER	DESCRIPTION	QTY

FIGURE 5.0

**SERIES 2000[®] TF HANGER ASSEMBLY
PART NUMBER 8010944**

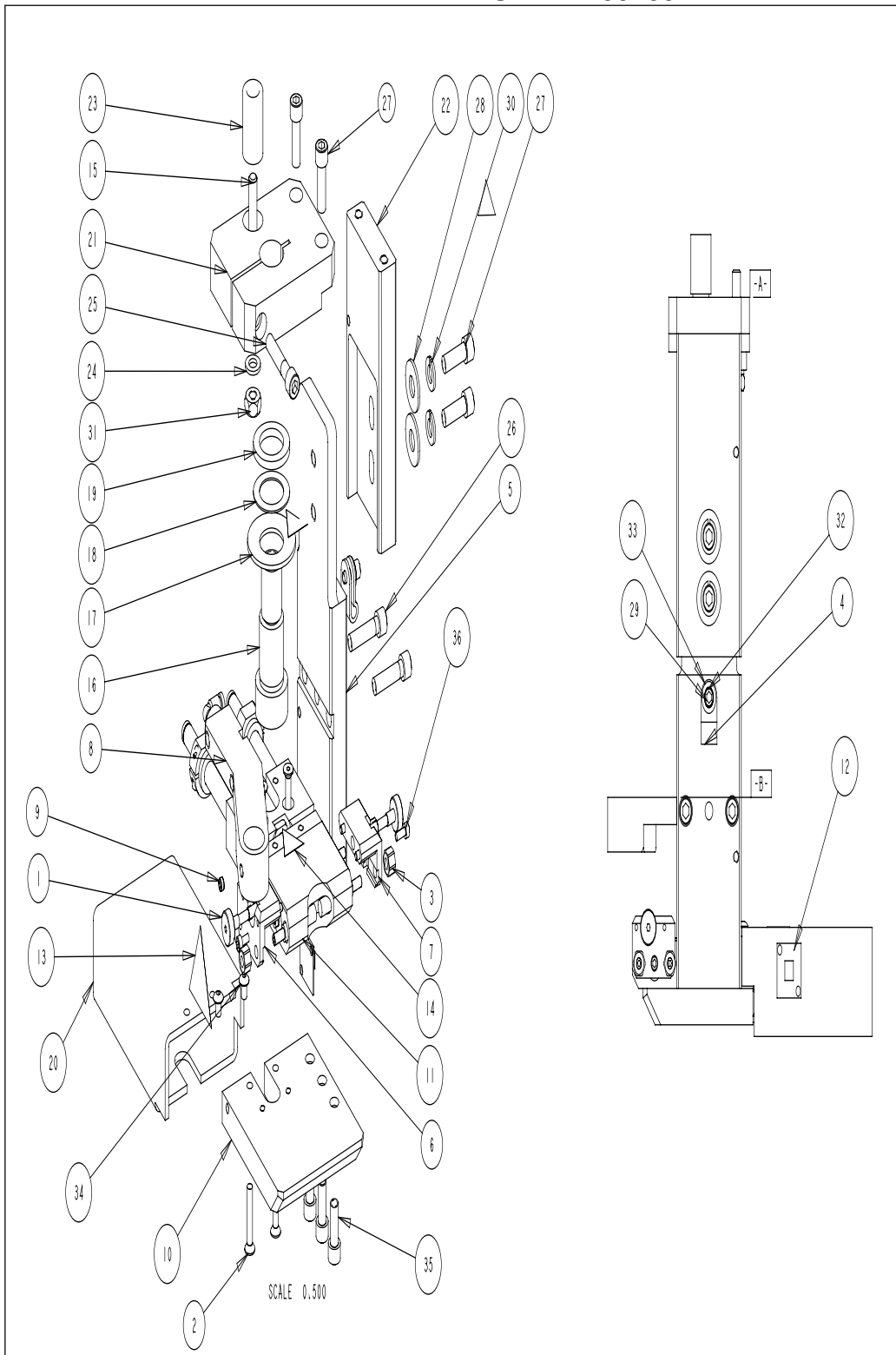


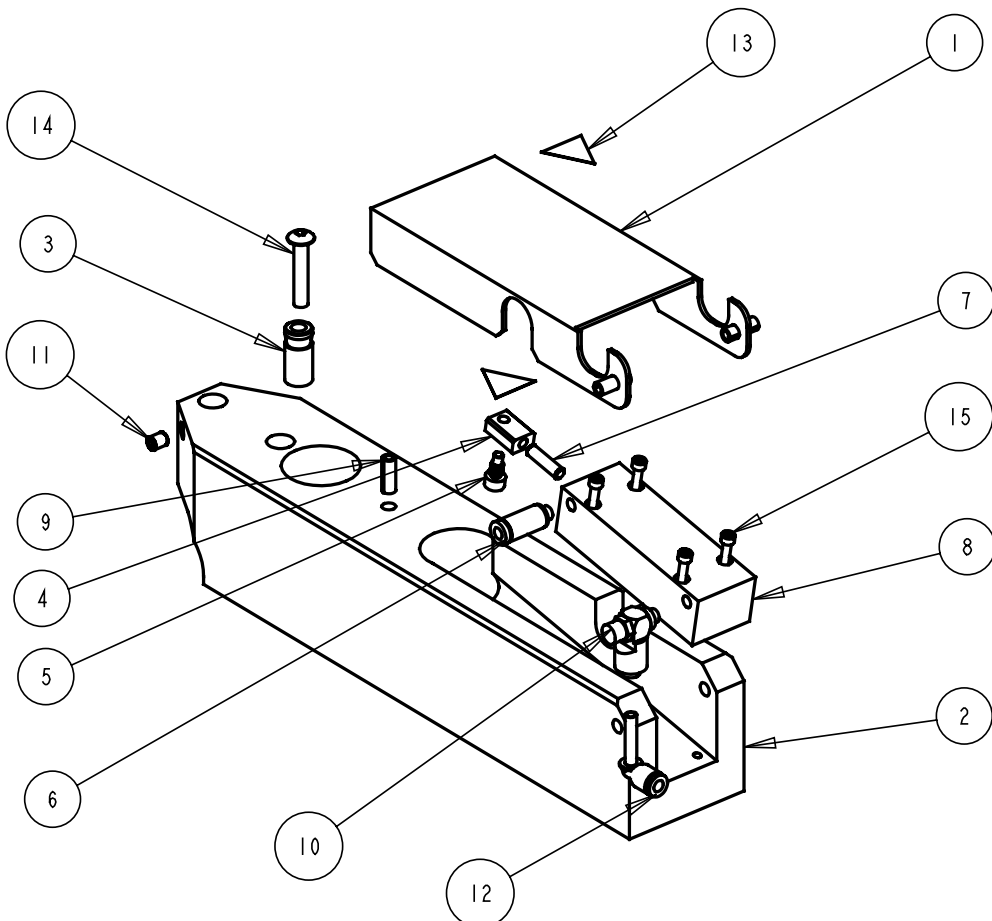
FIGURE 5.1

**SERIES 2000® TF HANGER ASSEMBLY BILL OF MATERIALS
PART NUMBER 8010944**

36	9800392094	SHCS M3 X 8MM STN STL	2
35	9800391262	SHCS 1/4-20 X 5/8" LG	3
34	980039840	BHCS #8-32 X 1/4 LG	2
33	980039837	WASHER, FLAT PLATED, #8	1
32	980039804	WASHER, LOCK PLATED, #8	1
31	980039477	HEX NUT, 1/4-20	1
30	980039476	WASHER, LOCK PLATED, 1/4	2
29	980039380	SHCS #8-32 X 3/8 LG	1
28	980039245	WASHER, FLAT PLATED, 1/4	2
27	980039169	SHCS 1/4-20 X 3/4" LG	4
26	980039076	SHCS 1/4-20 X 1" LG	2
25	980039072	SHCS 1/4-20 X 1-1/4" LG	1
24	8011341	WASHER, FLAT SS, 1/4	1
23	8011340	DRILL BUSHING	1
22	8010964	DROP PLATE , HANGER TOP, MODEL 2009	1
21	8010963	CLAMP, HANGER PIVOT	1
20	8010931	COVER, EXTENDED SLIDE	1
19	8010889	SHIM WASHER	1
18	8010888	SHIM WASHER	1
17	8010887	DISC SPRING, .755 ID x 1.50 OD x .072 THK	1
16	8010886	SHOULDER SCREW 1 X 1 X 3/4-10	1
15	8010759	SSS 1/4-20 X 1-3/4"	1
14	8008512	LABEL, PINCH POINT, "D" SIZE	3
13	8008439	LABEL, GENERAL WARNING, "C" SIZE	1
12	8007462	WIRE TIE BLOCK - T&B# MPNY-750-C-3/4X3/4	1
11	8006256	SLIDE/GRIPPER ASSEMBLY, 2008	1
10	8006245	PLATE, SLIDE SUPPORT, 2008	1
9	8004460	SSS, #10-32 X 1/8" LG	1
8	8004458	STUD TUBE HANGER, POSITIONING SCREW	1
7	8003841	JAW BRACKET LH	1
6	8003840	JAW BRACKET RH	1
5	8002981	HANGER BOTTOM DROP PLATE	1
4	8001804	CLAMP, NYLON LOOP	1
3	8000690	NUT NYLOCK #8-32	4
2	8000461	FHCS #8-32 X 1 IN LG	4
1	8000374	CAPTIVATED THUMB SCREW	2
ITEM	PART NUMBER	DESCRIPTION	QTY

FIGURE 5.1 BOM

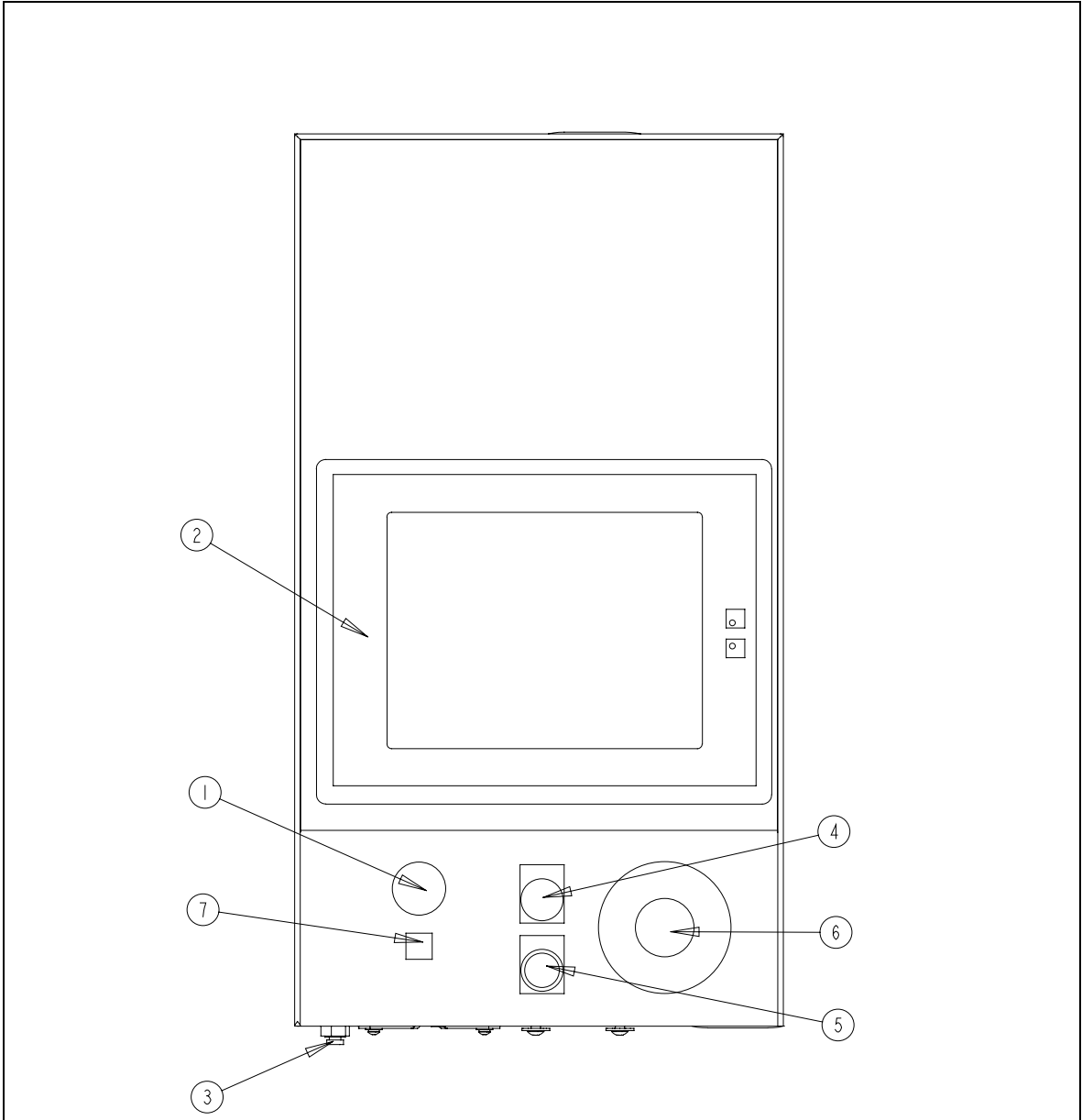
FIGURE 5.2
 SERIES 2000 ANVIL HOLDER ASSEMBLY
 PEM PART NO. 8000672



BILL OF MATERIAL			
ITEM	PART NUMBER	DESCRIPTION	QTY
1	8000042	ANVIL HOLDER COVER	1
2	8000112	UNIVERSAL ANVIL HOLDER (MODIFIED)	1
3	8000117	ANVIL HOLDER LOCATING PIN	1
4	8000139	ANVIL HOLDER AIR CLY. CLEVIS	1
5	8000257	CLEVIS LOCATING PIN	1
6	8000313	STRAIGHT FITTING 5/32 TUBE TO #10-32	1
7	8000459	SSS #8-32 UNC-2A X 5/8 LG	1
8	8000467	BOTTOM FEED PUSH CYLINDER	1
9	8000828	ROLL PIN, 3/16 DIA. X 1/2 LONG	3
10	8001586	VALVE, SPEED CONTROL, 10-32 X 5-32 TUBING	1
11	8002083	SSS #10-32 X 1/4", KNURLED CUP POINT	1
12	8003753	FITTING, ELBOW, 5/32 TUBE	1
13	8008512	LABEL, PINCH POINT, "D" SIZE	2
14	9800391431	BHCS #10-32 UNF-2A X 1 LG	1
15	9800393014	SHCS #4-40 X 3/4 LG	4

SECTION 6

OPERATOR CONTROLS

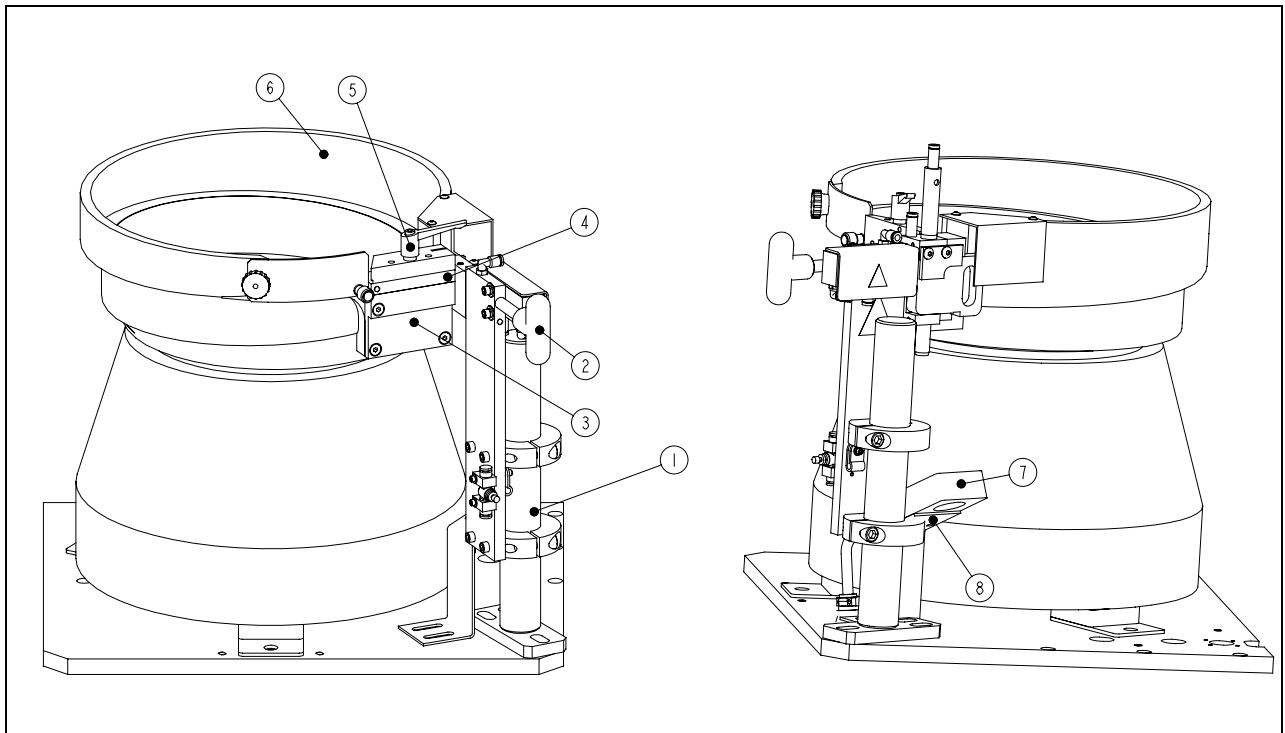


7	8004511	PUSHBUTTON LASER SPOTTING LIGHT	1
6	8004510	PUSHBUTTON EMERGENCY STOP (RED)	1
5	8008510	PUSHBUTTON OFF (AMBER)	1
4	8004508	PUSHBUTTON ON (GREEN)	1
3	8002178	BULKHEAD FITTING 1/4 TUBE	1
2	8000856	TOUCH SCREEN	1
1	8000174	AUDIO ALARM W/ VOLUME CONTROL	1
ITEM	PART NUMBER	DESCRIPTION	QTY

FIGURE 6.0

SECTION 7

FEEDER BOWL AREA



N/S	8004168	BOWL POTENTIOMETER 100 KOHM (NOT SHOWN)	1
N/S	8008580	BOWL CONTROL DRIVER, 230VAC (NOT SHOWN)	1
	8008595	BOWL CONTROL DRIVER, 120VAC (NOT SHOWN)	1
N/S	8011353	FEEDER BOWL COIL (MAGNET) 230VAC	1
	8011487	FEEDER BOWL COIL (MAGNET) 120VAC	1
8	8011162	MOUNTING BRACKET RING SENSOR	1
7	8000191	STUD-IN-TUBE SENSOR, 15MM	1
	8002494	STUD-IN-TUBE SENSOR, 25MM	1
6	8007628	BOWL ASSEMBLY, VIBRATORY FEEDER, 230VAC	1
	8007627	BOWL ASSEMBLY, VIBRATORY FEEDER, 120VAC	1
5	8004548	CLAMPING HANDLE, ADJUSTABLE, #10-32 X 1-1/4 LG	1
4	8004481	NUT GATE ADAPTER	1
3	8007630	ESCAPEMENT ADAPTER ASSEMBLY	1
2	8001126	ASSEMBY, SCREW HANDLE	1
1	8011120	SHUTTLE SUPPORT ASSEMBLY	1
ITEM	PART NUMBER	DESCRIPTION	QTY

FIGURE 7.0

SERIES 2009 SHUTTLE SUPPORT ASSEMBLY
P/N 8011120

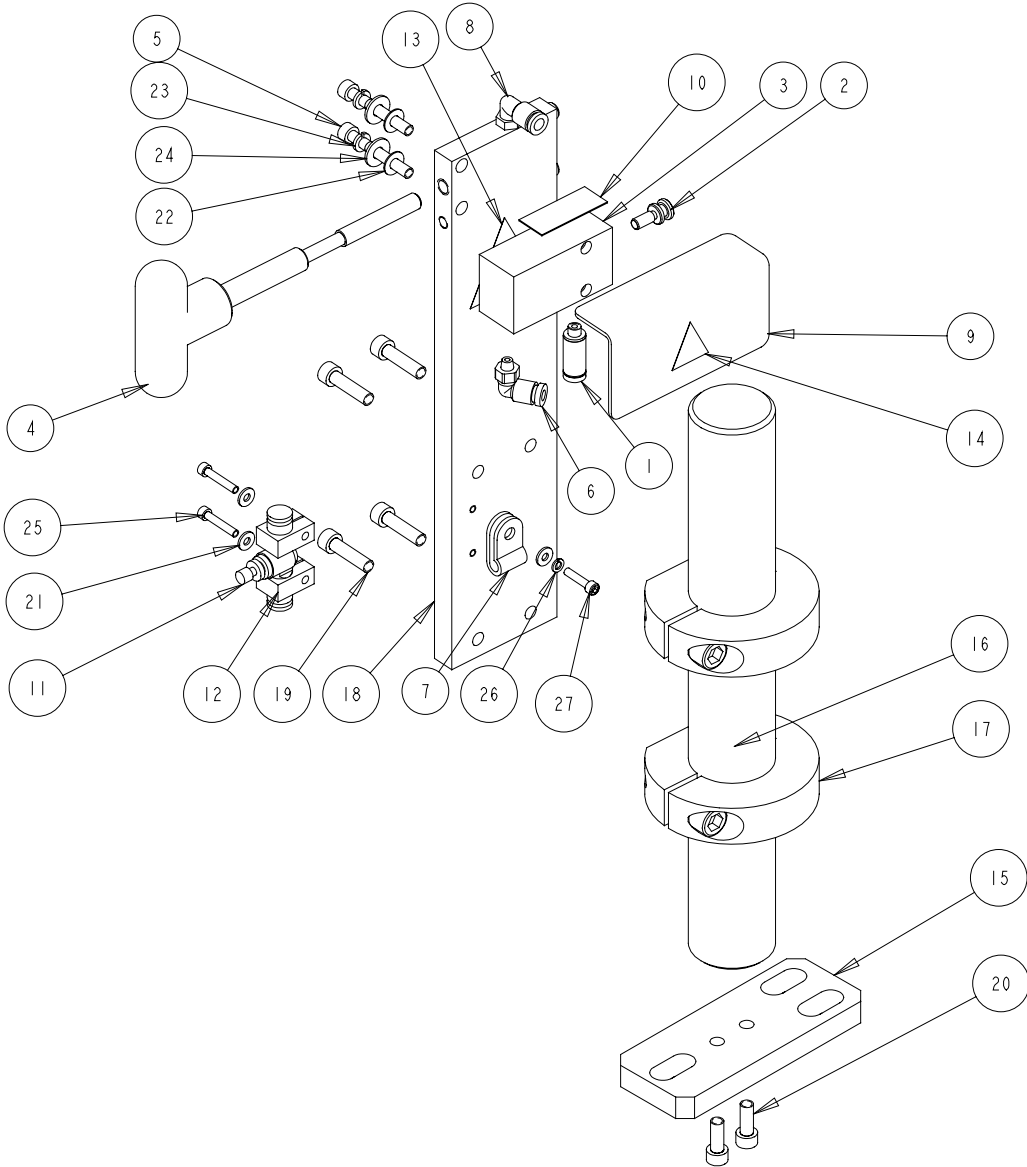


FIGURE 7.1

SERIES 2009 SHUTTLE SUPPORT ASSEMBLY
P/N 8011120

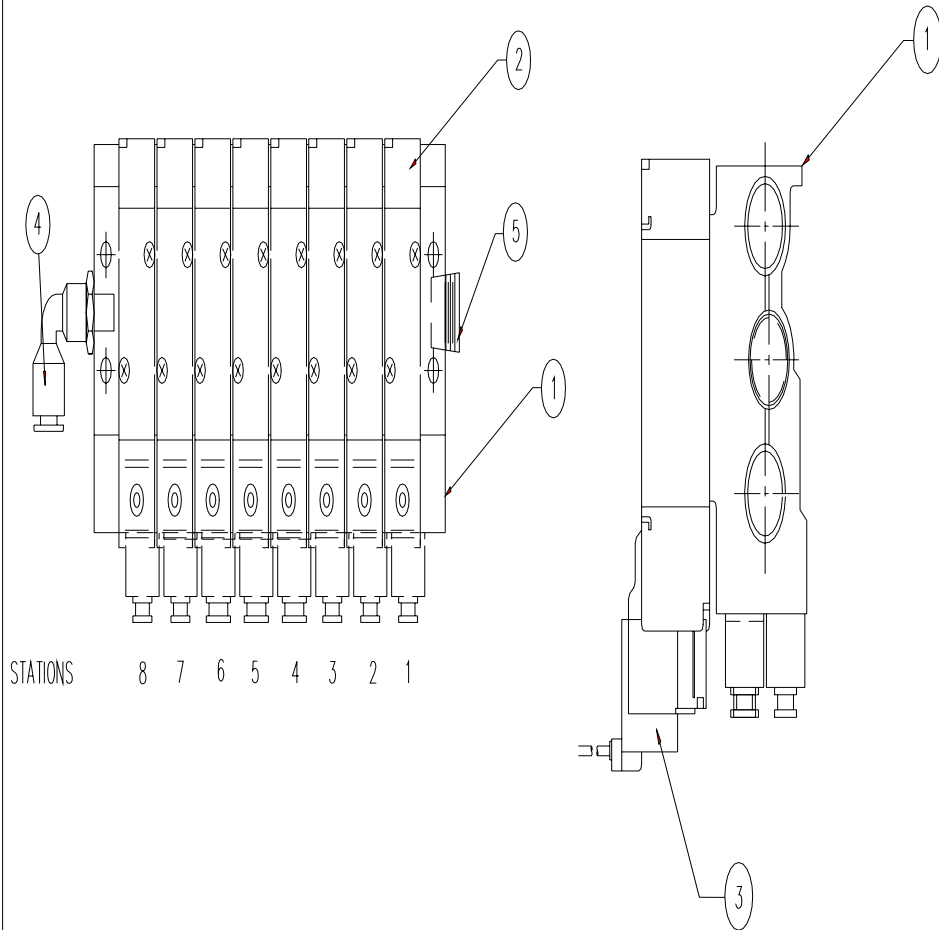
27	9800391026	SHCS #4-40 X 1/2 LG	1
26	9800391019	WASHER, LOCK PLATED, #4	1
25	980039905	SHCS #4-40 X 5/8 LG	2
24	980039837	WASHER, FLAT PLATED, #8	2
23	980039804	WASHER, LOCK PLATED, #8	2
22	980039749	SPUR WASHER	2
21	980039445	WASHER, FLAT PLATED, #4	3
20	980039240	SHCS #10-32 X 1/2 LG	2
19	980039145	SHCS #10-32 X 3/4 LG	4
18	8011122	SHUTTLE SUPPORT BRACKET	1
17	8011121	CLAMP COLLAR MODIFIED	2
16	8011119	COLUMN, SHUTTLE SUPPORT	1
15	8011118	BASE PLATE, SHUTTLE SUPPORT	1
14	8008512	LABEL, PINCH POINT, "D" SIZE	1
13	8008439	LABEL, GENERAL WARNING, "C" SIZE	1
12	8006128	FLOW CONTROL BRACKET	2
11	8005969	VALVE FLOW CONTROL 5/32 FITTING	1
10	8002952	DOUBLE SIDED TAPE	1
9	8002951	SHUTTLE GUARD	1
8	8002910	FITTING, MALE ELBOW 1/4" O.D. 10-32	1
7	8001804	CLAMP, NYLON LOOP	1
6	8001681	MALE ELBOW 10-32 UNF X 5/32 TUBING	1
5	8001575	SHCS #8-32 X 1 1/4 LG	2
4	8001126	SCREW HANDLE ASSY, SHUTTLE SUPPORT	1
3	8000680	SHUTTLE AIR CYLINDER	1
2	8000498	SHUTTLE COUPLER	1
1	8000313	STRAIGHT FITTING 5/32 TUBE TO #10-32	1
ITEM	PART NUMBER	DESCRIPTION	QTY

FIGURE 7.1-2

SECTION 8

TOOLING VALVE ENCLOSURE

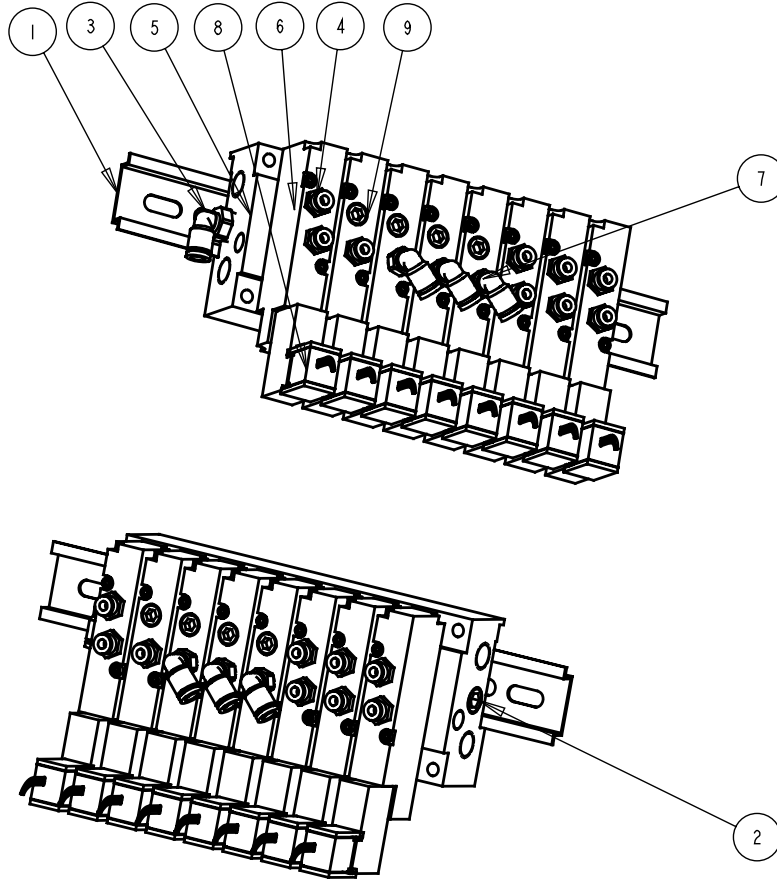
FIGURE 8.1
 SERIES 2000 - 8-STATION MANIFOLD ASSEMBLY - VER 3
 PEM PART NO. 8003054



BILL OF MATERIAL			
ITEM	PEM PART NUMBER	DESCRIPTION	QTY
1	8004095	8-STATION MANIFOLD FOR .26 CV VALVES	1
2	8003211	VALVE - 4-WAY, 2-POSITION .26 CV	8
3	8004074	CONNECTOR WITH 48" LEADS	8
4	8004096	ELBOW 1/4 PT X 1/4 DIA TUBE	1
5	8004097	BRASS PLUG 1/4" NPT.	1

FIGURE 8.1-A (230V PRESS ONLY)

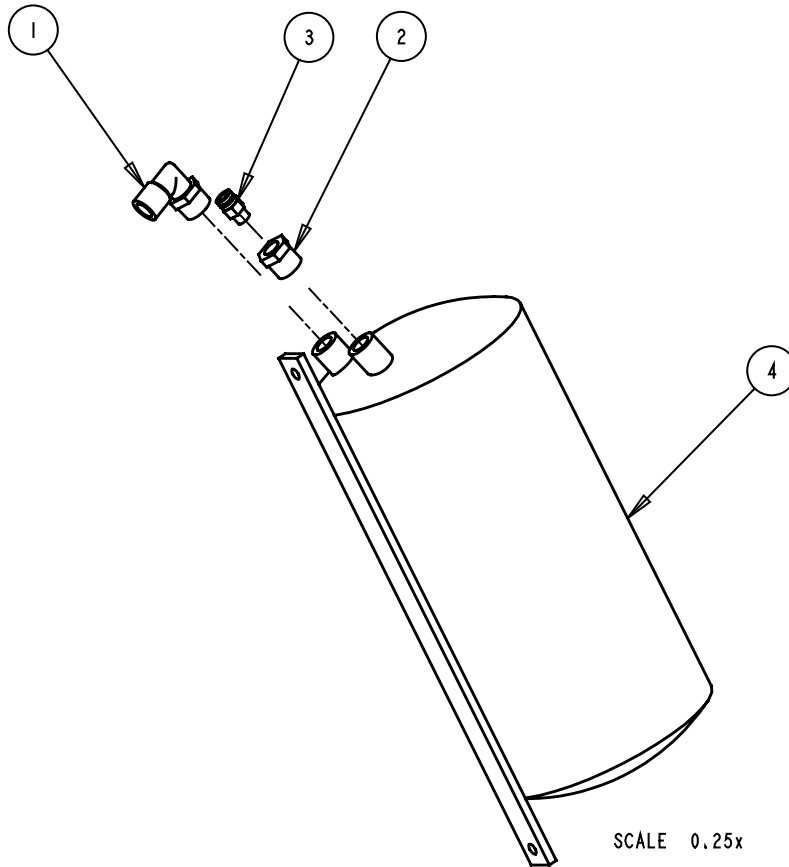
SERIES 2008 8-STATION MANIFOLD ASSEMBLY
 PEMSERTER PART NUMBER 8006313 (SCALE .400)



9	9800391692	1/8 NPT PLUG	4
8	8007543	ELECTRICAL CONNECTOR W/ 1 METER LEAD & LED	8
7	8006862	MALE ELBOW 1/8 NPT X 1/4 TUBING	3
6	8006315	VALVE BODY, 4-WAY, 2-POS, BODY PORTED, 1/8 NPT	8
5	8006314	8 STATION VALVE MANIFOLD, PARKER	1
4	8000361	FITTING, STRAIGHT, 1/8 MPT TO 5/32 TUBE	9
3	8000252	MALE ELBOW 1/4 NPT X 1/4 TUBING	1
2	8000238	PLUG, 1/4 NPT PIPE	1
1	8000216	DIN RAIL 35mm x 10mm	1
ITEM	PART NUMBER	DESCRIPTION	QTY

FIGURE 8.1-B (120V PRESS ONLY)

FIGURE 8.2
 SERIES 2000 PRESSURE RESERVOIR TANK ASSEMBLY
 PEM PART NO. 8003129



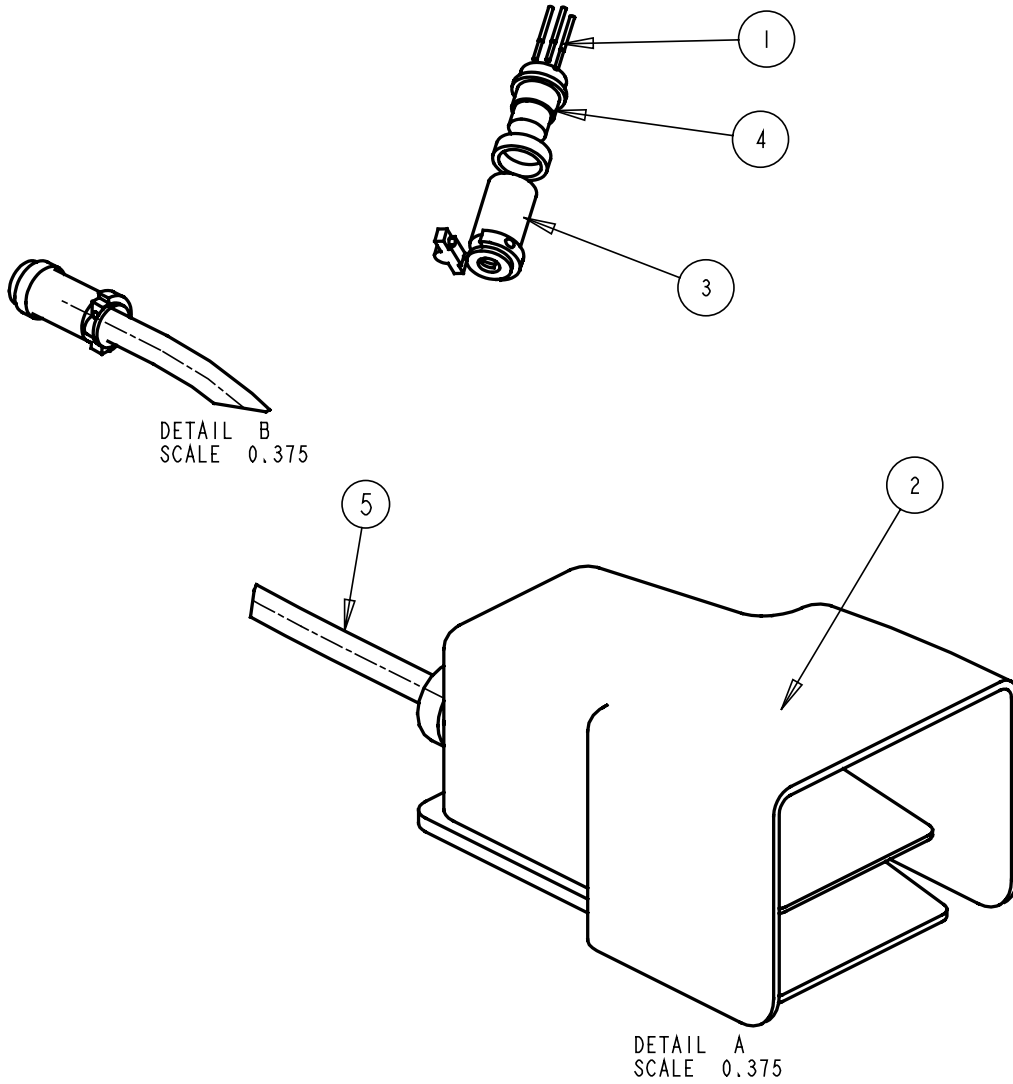
BILL OF MATERIAL			
ITEM	PART NUMBER	DESCRIPTION	QTY
1	8000225	FITTING ELBOW, 1/2 NPT TO 1/2 TUBE	1
2	8003244	REDUCER, 1/2 NPT MALE W/ 1/4 NPT FEMALE	1
3	8003245	FITTING 1/4 NPT TO 1/4 TUBE	1
4	8003246	AIR PRESSURE RESERVOIR TANK, 3 LITER	1

Reservoir Tank Sintered Filter Kit – 8008675

SECTION 9

FOOTSWITCH ASSEMBLY

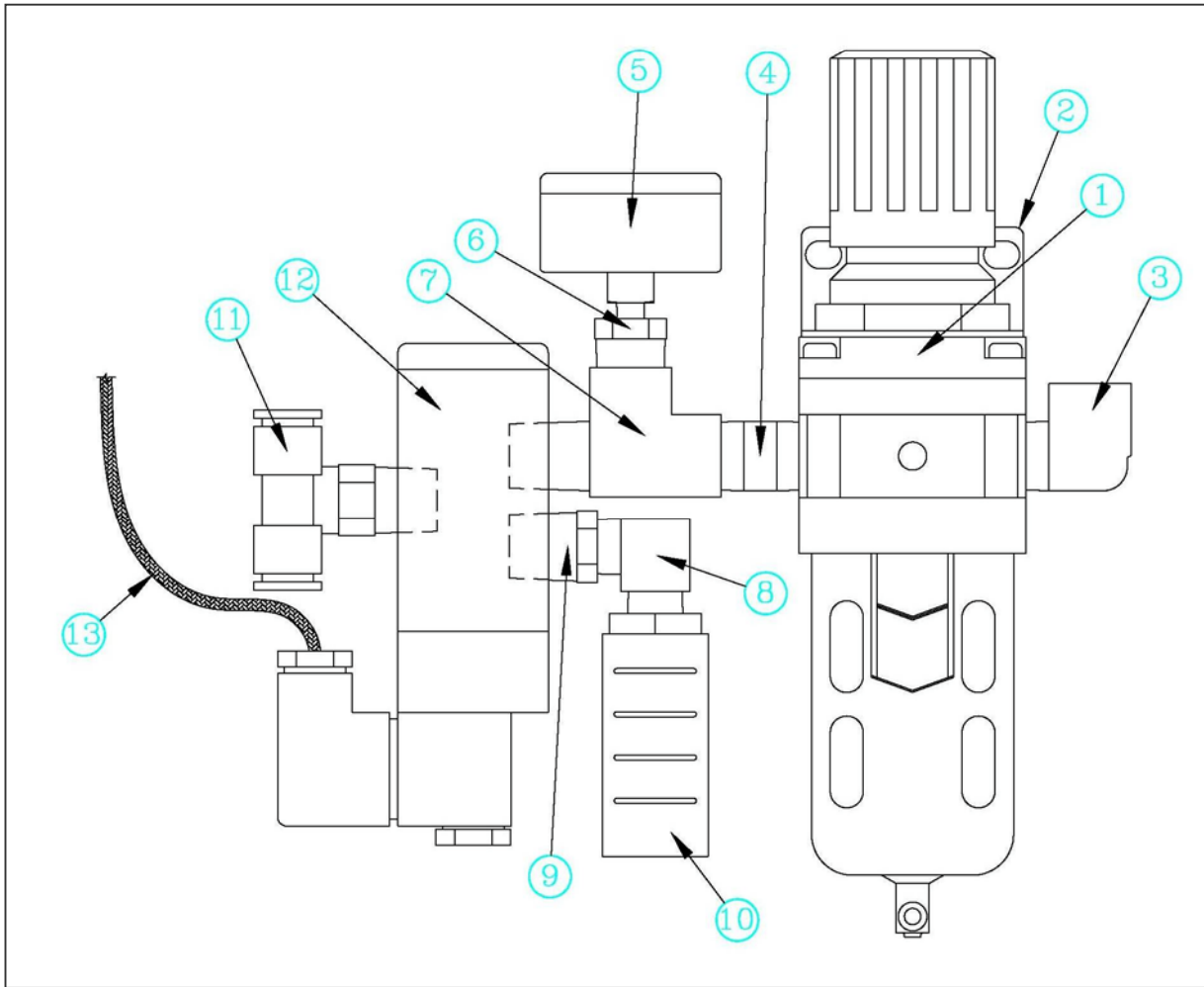
SERIES 2000 FOOTSWITCH ASSEMBLY
 PEM PART NO. 881920036



BILL OF MATERIAL			
ITEM	PART NUMBER	DESCRIPTION	QTY
1	8000308	CRIMP CONTACT 24 - 20 A	3
2	8008522	FOOTSWITCH, ELECTRIC, SERIES 2000	1
3	8009587	CABLE CLAMP	1
4	980039192	MALE AMPHENOL	1
5	8008507	CORD, SJOOW 18/3, 300V	10.25FT

SECTION 10

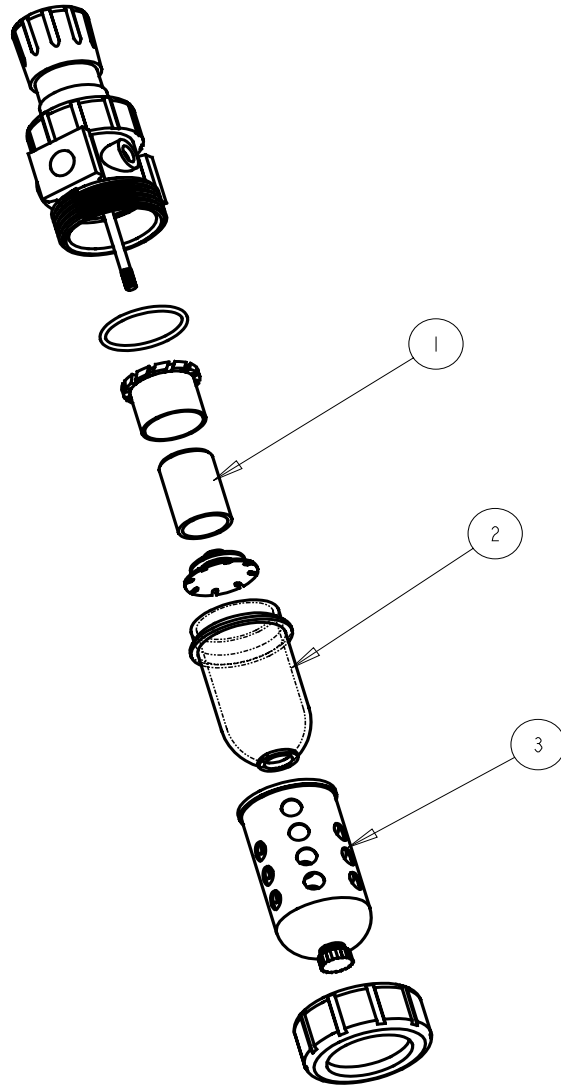
FILTER/REGULATOR ASSEMBLY



FILTER/REGULATOR ASSEMBLY – P/N 8006217					
ITEM	P/N	DESCRIPTION	MANUFACTURER	MFG P/N	QTY
1	8011707	1/2" FILTER / REGULATOR	JANATICS	FRC159334	1
2	8011708	MOUNTING BRACKET	PARKER	PS707P	1
3	8011705	1/2" STREET ELBOW	PRESSURE CON.	3400-08-08	1
4	8011704	1/2" NIPPLE 1.5" LONG	PRESSURE CON.	3326-08-1.5	1
5	8011706	2", 0-160 PSI GAUGE	UCI	SAD1501-1610	1
6	8011702	1/2" X 1/4" REDUCER BUSHING	PRESSURE CON.	3220-08-04	1
7	8011701	1/2" MALE RUN TEE	PRESSURE CON.	3750-08-08-08	1
8	8006327	3/8" STREET ELBOW	PARKER	2202P-6-6	1
9	8011703	1/2" X 3/8" REDUCER BUSHING	PRESSURE CON.	3220-08-06	1
10	8011700	3/8" MUFFLER	UCI	HPM-3	1
11	8011698	1/2" NPT X 1/2" TUBE TEE	PISCO	PB1/2-N4UT	1
12	8011699	1/2" 3 WAY NC, W/ LIGHTED DIN	MINDMAN	MVSC-460-3E1-NC-L-DC24V	1
13	8011709	60" LEAD 2 CONDUCTOR 18AWG	BELDEN	5300UE 008 (GRY)	1

FIGURE 10.0

FILER/REGULATOR ASSEMBLY - REPLACEMENT PARTS



ITEM	P/N	DESCRIPTION	QTY
1	8011724	FILTER ELEMENT	1
2	8011725	FILTER BOWL	1
3	8011726	FILTER GUARD	1

FIGURE 10.1

SECTION 11

GENERAL SPARE PARTS

SECTION 11 SPARE PARTS

PART DESCRIPTION	PFT PART NUMBER	QTY	FIGURE NO. IN PARTS MANUAL
Auto Transmission Fluid- Dextron II	980039225	1 Gal.	N/A
VALVE, BOOSTER	8002228	1	Figure 2.2
VALVE, RAM	8002229	1	Figure 2.2
SENSOR, SAFETY	8009715	1	Figure 4
VALVE, 4 WAY 2 POSITION (220V PRESS ONLY)	8003211	1	Figure 8.1 – A
VALVE, 3 WAY PORTED (110V PRESS ONLY)	8006315	1	Figure 8.1 – B
AIR CYL. (SHUTTLE)	8000680	1	Figure 2.1
AIR CYL. (PUSHER)	8000467	1	Figure 5.2
GRIPPER	8006257	1	Figure 5.1
LINEAR SLIDE	8006258	1	Figure 5.1
FUSE KIT	8004145	1	Fuses in Figure 3
CPU	8011349	1	Figure 3
POWER SUPPLY RACK	8011319	1	Figure 3
ANALOG LVDT INPUT	8011346	1	Figure 3
SIXTEEN (16) POINT DC OUTPUT MODULE	8011345	1	Figure 3
POWER SUPPLY, 24V	8004552	1	Figure 3
ELECTRONIC PILOT REGULATOR	8008375	1	Figure 2
FILTER ELEMENT	8011724	1	Figure 10.1
BOWL CONTROL DRIVER	8008595 (120VAC) 8008580 (230VAC)	1	Figure 7.0 (Not Shown)
BOWL POTENTIOMETER 100 KOHM	8004168	1	Figure 7.0 (Not Shown)
RESERVOIR TANK SINTERED FILTER KIT	8008675	1	Figure 8.2 (Not Shown)

TUBING FOR THE PEMSERTER® SERIES 2000® PRESS:

PART NUMBER	DESCRIPTION
8000253	TUBING 1/2" DIA POLYURETHANE, BLACK
8000310	TUBING 1/4" DIA POLYURETHANE, BLACK
8000311	TUBING 5/32" DIA POLYURETHANE, BLACK
8000454	TUBING 1/8" DIA POLYURETHANE, BLACK
8000766	TUBING.500 OD x.320ID POLYURETHANE, CLEAR
8004090	TUBING 5/16" DIA POLYURETHANE, BLACK
980039010	TUBING 1/4" DIA POLYURETHANE, CLEAR

AVAILABLE OPTIONS FOR THE PEMSERTER® SERIES 2000® PRESS:

PART NUMBER	DESCRIPTION
8000191	15mm DIA STUD-IN-TUBE SENSOR
8002937	SWEEPER ASSEMBLY FOR FEEDER BOWL

REPAIR KITS FOR THE PEMSERTER® SERIES 2000® PRESS MODEL 2007/2008:

PART NUMBER	DESCRIPTION
8003242	SHEFFER MAIN CYLINDER REPAIR KIT
8003243	SHEFFER BOOSTER REPAIR KIT
8005458	MILLER MAIN CYLINDER REPAIR KIT
8005459	MILLER BOOSTER REPAIR KIT

FILTERS FOR THE PEMSERTER® SERIES 2000® PRESS MODEL 2008/18

PART NUMBER	DESCRIPTION
8006365	FILTER REGULATOR ELEMENT (FIGURE 10)
8003139	FILTER ELECTRONIC REGULATOR (FIGURE 2)

PRESS ACCESSORIES

PART NUMBER	DESCRIPTION	FEATURES AND BENEFITS
8005538 (120V) (US)	INDUSTRIAL WORK LIGHT	<ul style="list-style-type: none"> • FLEXIBLE, EFFICIENT COVERAGE OF WORKING AREA • BRIGHT 20W HALOGEN BULB • MAGNETIC BASE MOUNTS TO FRAME • 120V/220V MODELS AVAILABLE
8005539 (220V) (EUROPE)		

PRESS ACCESSORIES (Continued)

PART NUMBER	DESCRIPTION	FEATURES AND BENEFITS
8005534	COALESCING FILTER	<ul style="list-style-type: none"> • HIGHER LEVEL OF FILTRATION - REMOVES 93% OF 0.01 MICRON PARTICLES • AUTOMATIC DRAIN WITH SIGHT-GLASS FOR MONITORING FLUID LEVELS • BUILT-IN DIFFERENTIAL PRESSURE INDICATORS • 1/4 TURN QUICK RELEASE BOWL FOR EASY MAINTENANCE
8005537	ANTI-FATIGUE WORK MAT	<ul style="list-style-type: none"> • SOLID POLYURETHANE NODULE DESIGN INCREASES BLOOD CIRCULATION AND REDUCES CUMULATIVE TRAUMA DISORDERS ASSOCIATED WITH PROLONGED STANDING. • CHEMICAL RESISTANT • DURABLE AND EASY TO CLEAN • SHOCK ABSORBENT WITH TAPERED EDGES • 24" BY 36" • TWO YEAR WEAR WARRANTY
8005531	INDUSTRIAL WORK SEAT	<ul style="list-style-type: none"> • ERGONOMIC DESIGN IMPROVES COMFORT AND INCREASES WORKER PRODUCTIVITY • FOUR EASY TO USE HEIGHT (16" TO 32") AND TILT ADJUSTMENTS • DURABLE POLYURETHANE SEAT • FOOT REST STEP RAIL • BUILT TOUGH FOR INDUSTRIAL ENVIRONMENT • SWIVEL STOP FEATURE MAKES GETTING ON AND OFF THE CHAIR EASY AND SAFE • FIVE YEAR, THREE SHIFT WARRANTY
8005540 (UK) 8005541 (GER) 8005542 (FR)	220V SURGE SUPPRESSOR	<ul style="list-style-type: none"> • ADDED OVER-VOLTAGE PROTECTION FOR ELECTRONICS • CONTINUOUSLY MONITORED BY BUILT-IN TEMPERATURE FUSE • LIGHT AND AUDIO DEFECT SIGNAL • CONVENIENT IN-LINE CONNECTION